

MARK 1

PROFESSIONAL LED

IN-CAR RECHARGEABLE



Setting a New Standard in the Law Enforcement industry...

Designed in Australia in conjunction with law enforcement specialists, the new Top Gun Mark 1 Professional Heavy Duty LED Torch represents the very latest in technology.

Made from American components and hard anodised aircraft aluminium, the torch houses a long lasting Lithium-Ion battery to power its bright LED.

Features Include:

- Brilliant American CREE LED
- Rechargeable 12/24V & 240V Cradle
- Unique Two Switch Mechanism with Tactical On/Off
- **5 Hour Run Time** on 100% Brightness Mode



LAW
ENFORCEMENT



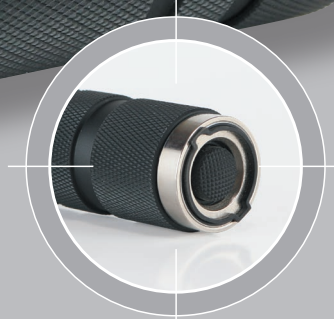
SECURITY



ARMED
FORCES



EMERGENCY
SERVICES



Tactical Rear
On/Off Switch



3-Stage Side Switch
& Low Battery Indicator



Easy 'Drop-In' Charger

The TOP GUN MK1 represents Australian ingenuity together with tomorrow's technology to surpass anything currently on offer anywhere in the world today...



► Build Quality

- Constructed from aircraft quality aluminium finished in matt black and hard anodized for better wear and tear protection.
- LED is the new American Cree 3W – recognized as the brightest and best available in the world today.
- Grip texture allows for a non-slip hold.
- Complies with Australian and world electronic standards.
- Lens made of unbreakable material. The torch itself will withstand being dropped from shoulder height on to a hard surface with minimal damage.



► Dual Switch Feature

- Unique dual switch feature provides side and rear switches.
- The side switch has 3 electronic modes:
 - First press provides 100% of power.
 - Second press provides 25% of power.
 - Holding switch fully pressed for 1-3 seconds puts torch into strobe or flash mode.
- Rear tactical (second) electronic switch is simply an on/off mode at 100% of power.



► Low Battery Indicator

- Small red LED built into the side switch begins to flash when there is less than 20 minutes running time remaining in the battery.
- LED warning light has been designed so it emits only a tiny amount of light that can be seen only by the operator.



► Water Resistance

- “O” rings on the front head and rear cap protect the torch from dust and water ingress.

► Running Time

- Torch run time is 5 hours+ on full power producing approximately 130 lumens.
- Computer generated reflector provides a brilliant central pure white circle spot with a wide surrounding “halo” effect for peripheral vision, eliminating the need for a focusing function.
- At 25% or strobe mode, the minimum expected run time is 15 hours+. 25% brightness mode is equal to many other comparable LED torches operating on 100% mode.

► Recharge Time

- Recharges from flat to full charge in approximately two hours.
- Accepts part-charging as the battery has no memory. In an emergency, a charge of 15-20 minutes will provide around 40 minutes of light at 25% mode.

**Specifications correct at time of printing and subject to change without notification.*

► In-Car Charger

- Highly sophisticated charger has been developed to fit neatly into most vehicles.
- Two separate charging channels, indicated by the two LEDs on the top of the charger. (Second channel acts as a back-up to first channel charge).
- When torch is inserted into charger, two LEDs will glow RED, to indicate the battery is being charged. When fully charged the LEDs will change to GREEN.
- Fuse on top of charger protects circuitry of both the charger and the car from short circuiting during installation or any other unforeseen accident.
- Charger has a wide range of DC VOLTAGE – operating from 7V up to 28V for connecting to 12V or 24V battery systems.
- Charger has provision (underneath) for 12V and 240V charging sockets.
- A further hard wiring option is a special hard wiring plug that can be used where the normal 12V socket is deemed inappropriate and a more secure heavy duty wiring installation is required.
- Charger is made from fireproof nylon and all components and soldering are robotic and lead-free, complying with the international R.O.H.S certification for the reduction of green house emissions.
- Charger also incorporates both undercharge and over charge protection. The torch may be left in the charger indefinitely, as the “smart” electronics will cut out when the battery is fully charged and start again when the battery begins to discharge.



► Battery

- Torch battery is a lithium-ion 7.4V 2200mAh rechargeable.
- Both positive and negative at both ends so that it does not matter which end is inserted first into the torch.
- An IC electronic circuit (American technology) protects the battery from short circuiting. Should an accidental short circuit occur the battery will automatically shut off to prevent fire and/or possible explosion.
- The battery is encased in a specially designed sleeve which houses the above electronics and the terminals at each end are further protected by shock absorbing inner springs (shock proof).
- The battery is good for 2000 charge and recharge cycles.

► Carry Pouch

- The pouch is made from hard wearing material and has a Velcro fitting designed to accommodate the police/security belt width without difficulty. The pouch can be removed without taking the belt off.

► Traffic Control Wand – Optional Extra

- This super bright plastic wand is approx. 40cms. in length and fits on the end of the torch with an easy to use clip mechanism.
- The wand has a main body colour of safety orange and the end cap is in blue.



For more information and general enquiries
Phone: 03 9764 9769
 or visit: www.topguntorches.com.au

Soterion Pty Ltd
 Sole Australian Distributor
www.soterion.com.au
panther@soterion.com.au

